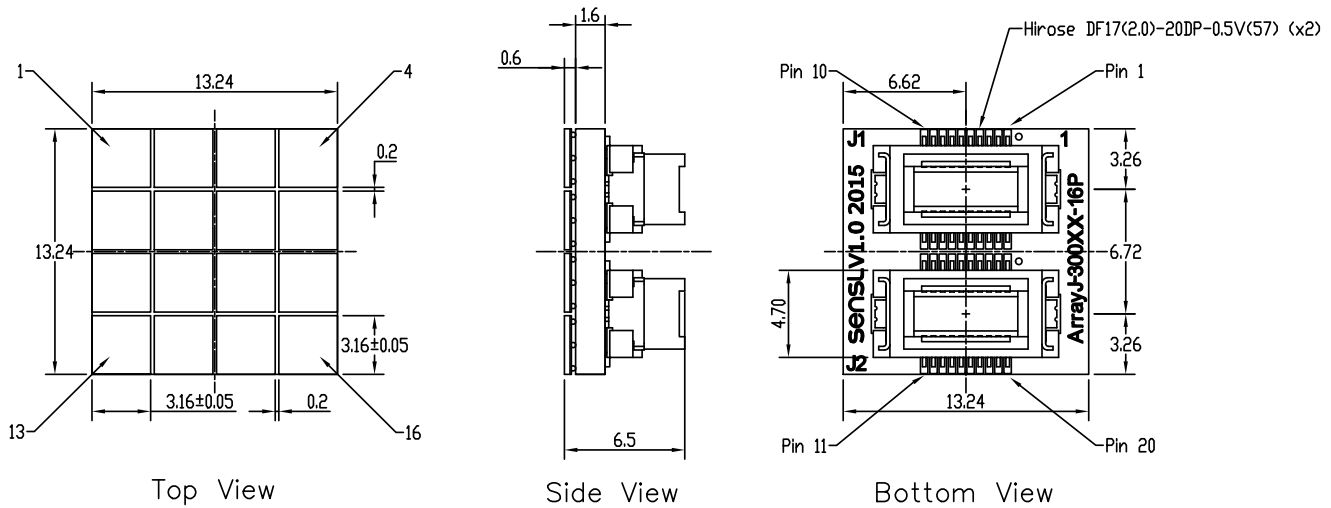


ARRAYJ-300XX-16P-PCB
CASE 100DJ
ISSUE O

DATE 31 JUL 2018



ArrayJ-30035-16P-PCB Pin Configuration			
J1		J2	
Pin #	Signal	Pin #	Signal
1	S2	1	S9
2	F1	2	F9
3	S1	3	S10
4	F2	4	F10
5	S3	5	S11
6	F3	6	F11
7	COM	7	COM
8	COM	8	COM
9	F4	9	S12
10	S4	10	F12
11	F8	11	F16
12	S8	12	S16
13	COM	13	COM
14	COM	14	COM
15	F7	15	F15
16	S7	16	S15
17	F6	17	F14
18	S6	18	S14
19	S5	19	S13
20	F5	20	F13

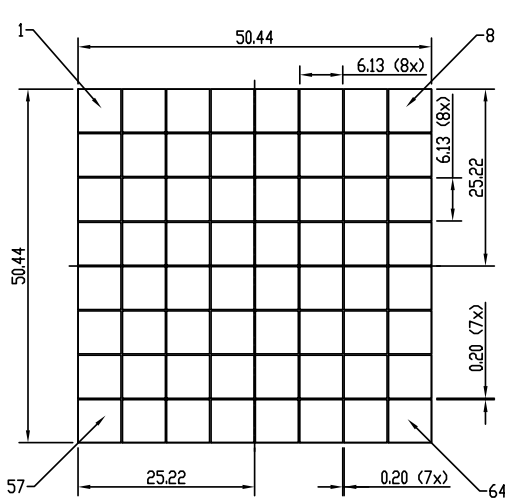
Signal Description	
Sn	SiPM n Standard Output/Anode
Fn	SiPM n Fast Output
COM	Common Cathode

DOCUMENT NUMBER:	98AON95341G	Electronic versions are uncontrolled except when accessed directly from the Document Repository. Printed versions are uncontrolled except when stamped "CONTROLLED COPY" in red.
DESCRIPTION:	ARRAYJ-300XX-16P-PCB	PAGE 1 OF 1

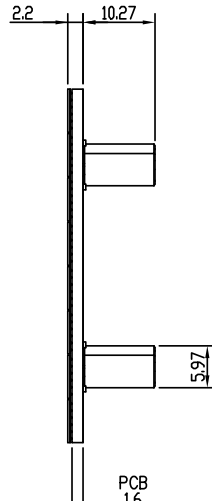
onsemi and onsemi are trademarks of Semiconductor Components Industries, LLC dba onsemi or its subsidiaries in the United States and/or other countries. onsemi reserves the right to make changes without further notice to any products herein. onsemi makes no warranty, representation or guarantee regarding the suitability of its products for any particular purpose, nor does onsemi assume any liability arising out of the application or use of any product or circuit, and specifically disclaims any and all liability, including without limitation special, consequential or incidental damages. onsemi does not convey any license under its patent rights nor the rights of others.

ARRAYJ-600XX-64P-PCB
CASE 100DM
ISSUE O

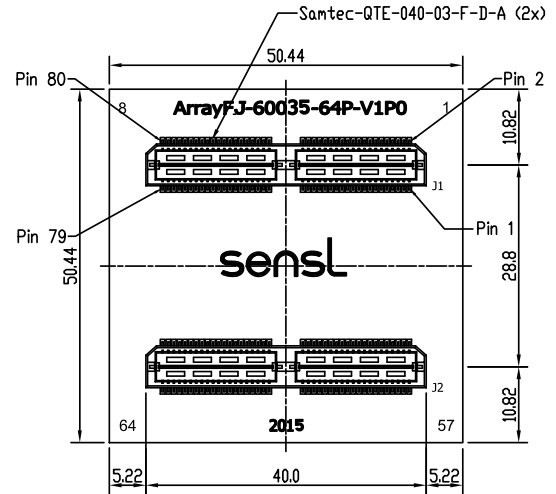
DATE 31 JUL 2018



Top View



Side View



Bottom View

All Dimensions $\pm 0.1\text{mm}$ Unless Otherwise Stated

ArrayJ-60035-64P-PCB Pin Configuration							
J1				J2			
Pin #	Signal	Pin #	Signal	Pin #	Signal	Pin #	Signal
1	S17	2	S1	1	S49	2	S33
3	F17	4	F1	3	F49	4	F33
5	S25	6	S9	5	S57	6	S41
7	F25	8	F9	7	F57	8	F41
9	S18	10	S2	9	S50	10	S34
11	F18	12	F2	11	F50	12	F34
13	S26	14	S10	13	S58	14	S42
15	F26	16	F10	15	F58	16	F42
17	S19	18	S3	17	S51	18	S35
19	F19	20	F3	19	F51	20	F35
21	S27	22	S11	21	S59	22	S43
23	F27	24	F11	23	F59	24	F43
25	S20	26	S4	25	S52	26	S36
27	F20	28	F4	27	F52	28	F36
29	S28	30	S12	29	S60	30	S44
31	F28	32	F12	31	F60	32	F44
33	COM	34	COM	33	COM	34	COM
35	COM	36	COM	35	COM	36	COM
37	COM	38	COM	37	COM	38	COM
39	COM	40	COM	39	COM	40	COM
41	S21	42	S5	41	S53	42	S37
43	F21	44	F5	43	F53	44	F37
45	S29	46	S13	45	S61	46	S45
47	F29	48	F13	47	F61	48	F45
49	S22	50	S6	49	S54	50	S38
51	F22	52	F6	51	F54	52	F38
53	S30	54	S14	53	S62	54	S46
55	F30	56	F14	55	F62	56	F46
57	S23	58	S7	57	S55	58	S39
59	F23	60	F7	59	F55	60	F39
61	S31	62	S15	61	S63	62	S47
63	F31	64	F15	63	F63	64	F47
65	S24	66	S8	65	S56	66	S40
67	F24	68	F8	67	F56	68	F40
69	S32	70	S16	69	S64	70	S48
71	F32	72	F16	71	F64	72	F48
73	COM	74	COM	73	COM	74	COM
75	COM	76	COM	75	COM	76	COM
77	COM	78	COM	77	COM	78	COM
79	COM	80	COM	79	COM	80	COM

Signal Description	
Sn	SIPM n Standard Output/Anode
Fn	SIPM n Fast Output
COM	Common Cathode

DOCUMENT NUMBER:	98AON95349G	Electronic versions are uncontrolled except when accessed directly from the Document Repository. Printed versions are uncontrolled except when stamped "CONTROLLED COPY" in red.
DESCRIPTION:	ARRAYJ-600XX-64P-PCB	PAGE 1 OF 1

onsemi and onsemi are trademarks of Semiconductor Components Industries, LLC dba onsemi or its subsidiaries in the United States and/or other countries. onsemi reserves the right to make changes without further notice to any products herein. onsemi makes no warranty, representation or guarantee regarding the suitability of its products for any particular purpose, nor does onsemi assume any liability arising out of the application or use of any product or circuit, and specifically disclaims any and all liability, including without limitation special, consequential or incidental damages. onsemi does not convey any license under its patent rights nor the rights of others.

MECHANICAL CASE OUTLINE

PACKAGE DIMENSIONS

ON Semiconductor®




ARRAYJ-600XX-4P-PCB
CASE 100DP
ISSUE O

DATE 31 JUL 2018

DRAWING TO COME


DOCUMENT NUMBER:	98AON95348G	Electronic versions are uncontrolled except when accessed directly from the Document Repository. Printed versions are uncontrolled except when stamped "CONTROLLED COPY" in red.
DESCRIPTION:	ARRAYJ-600XX-4P-PCB	PAGE 1 OF 2

ON Semiconductor and  are trademarks of Semiconductor Components Industries, LLC dba ON Semiconductor or its subsidiaries in the United States and/or other countries. ON Semiconductor reserves the right to make changes without further notice to any products herein. ON Semiconductor makes no warranty, representation or guarantee regarding the suitability of its products for any particular purpose, nor does ON Semiconductor assume any liability arising out of the application or use of any product or circuit, and specifically disclaims any and all liability, including without limitation special, consequential or incidental damages. ON Semiconductor does not convey any license under its patent rights nor the rights of others.

ARRAYJ-600XX-4P-PCB
CASE 100DP
ISSUE O

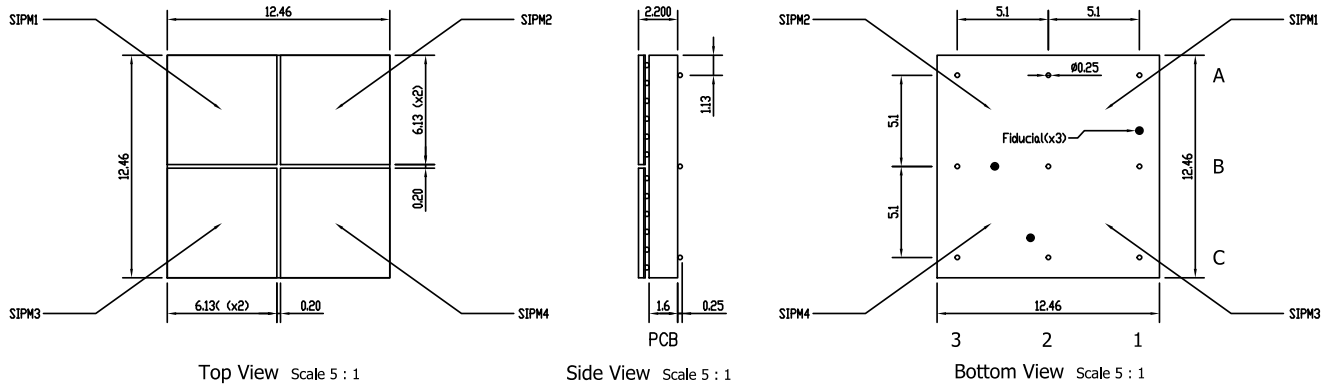
DATE 31 JUL 2018

DOCUMENT NUMBER:	98AON95348G	Electronic versions are uncontrolled except when accessed directly from the Document Repository. Printed versions are uncontrolled except when stamped "CONTROLLED COPY" in red.
DESCRIPTION:	ARRAYJ-600XX-4P-PCB	PAGE 2 OF 2

ON Semiconductor and  are trademarks of Semiconductor Components Industries, LLC dba ON Semiconductor or its subsidiaries in the United States and/or other countries. ON Semiconductor reserves the right to make changes without further notice to any products herein. ON Semiconductor makes no warranty, representation or guarantee regarding the suitability of its products for any particular purpose, nor does ON Semiconductor assume any liability arising out of the application or use of any product or circuit, and specifically disclaims any and all liability, including without limitation special, consequential or incidental damages. ON Semiconductor does not convey any license under its patent rights nor the rights of others.

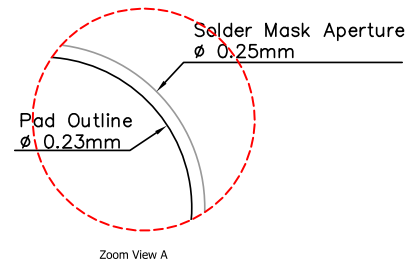
ARRAYJ-600XX-4P
CASE 100DL
ISSUE O

DATE 31 JUL 2018

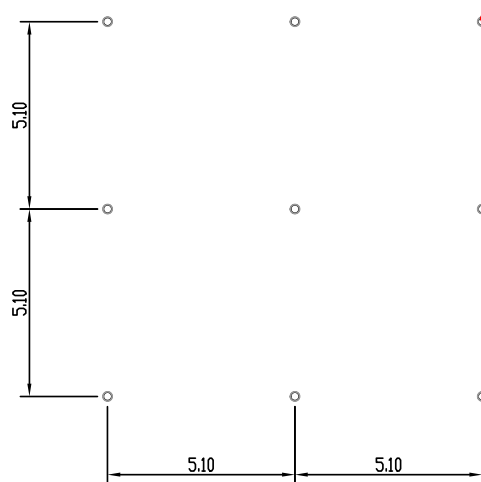


All Dimensions $\pm 0.1\text{mm}$ Unless Otherwise Stated

Solder Bump Assignments	
Bump #	Function
A1	Anode 1
A2	Anode 2
A3	Common Cathode
B1	Anode 3
B2	Anode 4
B3	Common Cathode
C1	Common Cathode
C2	Common Cathode
C3	Common Cathode



NOTE
Solder pads may be oversized to ease placement of the array on the carrier PCB. Consult with contract manufacturer for recommendation based on placement accuracy capability.



Recommended PCB Solder Footprint
Scale 10:1

DOCUMENT NUMBER:	98AON95347G	Electronic versions are uncontrolled except when accessed directly from the Document Repository. Printed versions are uncontrolled except when stamped "CONTROLLED COPY" in red.
DESCRIPTION:	ARRAYJ-600XX-4P	PAGE 1 OF 1

onsemi and onsemi are trademarks of Semiconductor Components Industries, LLC dba onsemi or its subsidiaries in the United States and/or other countries. onsemi reserves the right to make changes without further notice to any products herein. onsemi makes no warranty, representation or guarantee regarding the suitability of its products for any particular purpose, nor does onsemi assume any liability arising out of the application or use of any product or circuit, and specifically disclaims any and all liability, including without limitation special, consequential or incidental damages. onsemi does not convey any license under its patent rights nor the rights of others.

MECHANICAL CASE OUTLINE

PACKAGE DIMENSIONS

ON Semiconductor®




ARRAYJ-400XX-64P-PCB
CASE 100DS
ISSUE O

DATE 31 JUL 2018

DRAWING TO COME


DOCUMENT NUMBER:	98AON95345G	Electronic versions are uncontrolled except when accessed directly from the Document Repository. Printed versions are uncontrolled except when stamped "CONTROLLED COPY" in red.
DESCRIPTION:	ARRAYJ-400XX-64P-PCB	PAGE 1 OF 2

ON Semiconductor and  are trademarks of Semiconductor Components Industries, LLC dba ON Semiconductor or its subsidiaries in the United States and/or other countries. ON Semiconductor reserves the right to make changes without further notice to any products herein. ON Semiconductor makes no warranty, representation or guarantee regarding the suitability of its products for any particular purpose, nor does ON Semiconductor assume any liability arising out of the application or use of any product or circuit, and specifically disclaims any and all liability, including without limitation special, consequential or incidental damages. ON Semiconductor does not convey any license under its patent rights nor the rights of others.

ARRAYJ-400XX-64P-PCB
CASE 100DS
ISSUE O

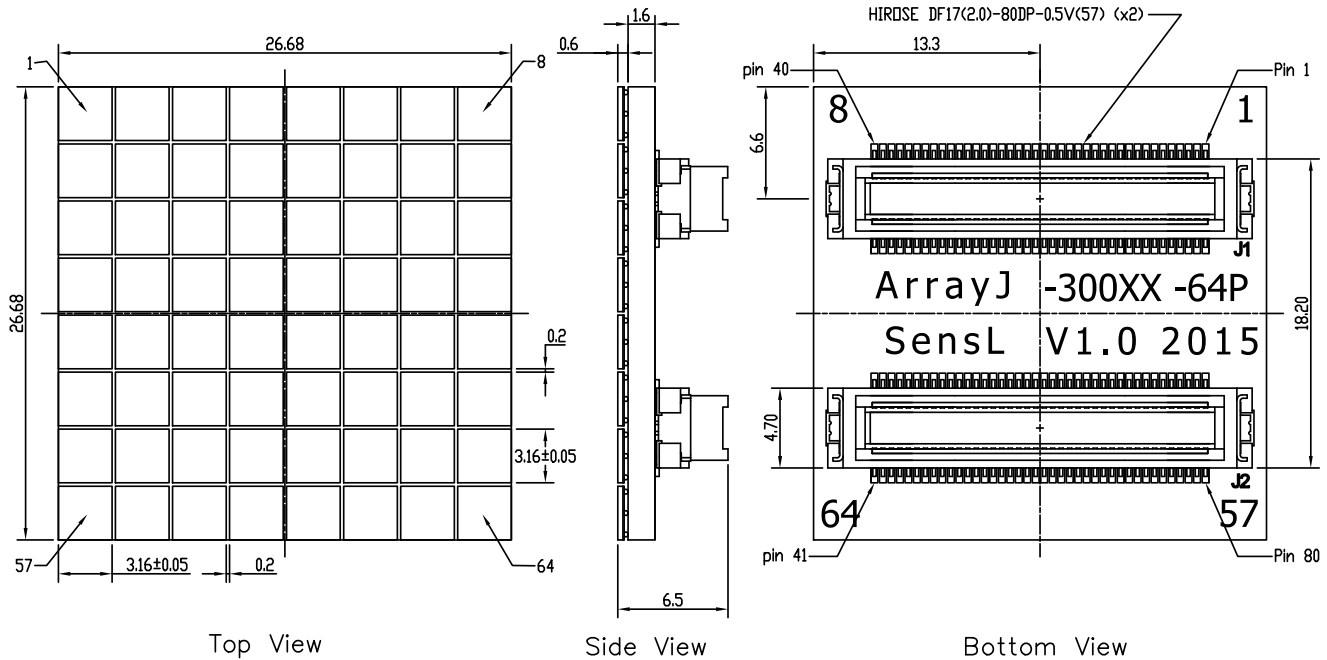
DATE 31 JUL 2018

DOCUMENT NUMBER:	98AON95345G	Electronic versions are uncontrolled except when accessed directly from the Document Repository. Printed versions are uncontrolled except when stamped "CONTROLLED COPY" in red.
DESCRIPTION:	ARRAYJ-400XX-64P-PCB	PAGE 2 OF 2

ON Semiconductor and  are trademarks of Semiconductor Components Industries, LLC dba ON Semiconductor or its subsidiaries in the United States and/or other countries. ON Semiconductor reserves the right to make changes without further notice to any products herein. ON Semiconductor makes no warranty, representation or guarantee regarding the suitability of its products for any particular purpose, nor does ON Semiconductor assume any liability arising out of the application or use of any product or circuit, and specifically disclaims any and all liability, including without limitation special, consequential or incidental damages. ON Semiconductor does not convey any license under its patent rights nor the rights of others.

ARRAYJ-300XX-64P-PCB
CASE 100DK
ISSUE 0

DATE 31 JUL 2018



All Dimensions ± 0.1mm Unless Otherwise Stated

Pin Configuration							
J1				J2			
Pin #	Signal	Pin #	Signal	Pin #	Signal	Pin #	Signal
1	S9	41	COM	1	S41	41	COM
2	S1	42	F24	2	S33	42	F56
3	F9	43	F32	3	F41	43	F64
4	F1	44	S24	4	F33	44	S56
5	COM	45	S32	5	COM	45	S64
6	S10	46	COM	6	S42	46	COM
7	S2	47	F23	7	S34	47	F55
8	F10	48	F31	8	F42	48	F63
9	F2	49	S23	9	F34	49	S55
10	COM	50	S31	10	COM	50	S63
11	S11	51	COM	11	S43	51	COM
12	S3	52	F22	12	S35	52	F54
13	F11	53	F30	13	F43	53	F62
14	F3	54	S22	14	F35	54	S54
15	COM	55	S30	15	COM	55	S62
16	S12	56	COM	16	S44	56	COM
17	S4	57	F21	17	S36	57	F53
18	F12	58	F29	18	F44	58	F61
19	F4	59	S21	19	F36	59	S53
20	COM	60	S29	20	COM	60	S61
21	S13	61	COM	21	S45	61	COM
22	S5	62	F20	22	S37	62	F52
23	F13	63	F28	23	F45	63	F60
24	F5	64	S20	24	F37	64	S52
25	COM	65	S28	25	COM	65	S60
26	S14	66	COM	26	S46	66	COM
27	S6	67	F19	27	S38	67	F51
28	F14	68	F27	28	F46	68	F59
29	F6	69	S19	29	F38	69	S51
30	COM	70	S27	30	COM	70	S59
31	S15	71	COM	31	S47	71	COM
32	S7	72	F18	32	S39	72	F50
33	F15	73	F26	33	F47	73	F58
34	F7	74	S18	34	F39	74	S50
35	COM	75	S26	35	COM	75	S58
36	S16	76	COM	36	S48	76	COM
37	S8	77	F17	37	S40	77	F49
38	F16	78	F25	38	F48	78	F57
39	F8	79	S17	39	F40	79	S49
40	COM	80	S25	40	COM	80	S57

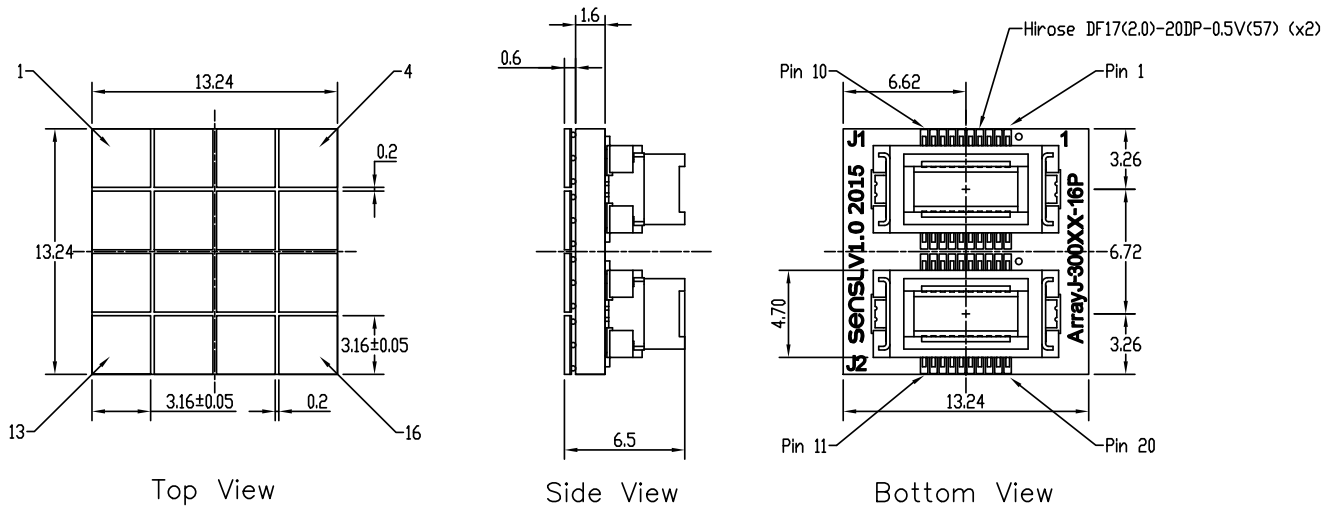
Signal Description	
Sn	SiPM n Standard Output/Anode
Fn	SiPM n Fast Output
COM	Common Cathode

DOCUMENT NUMBER:	98AON95342G	Electronic versions are uncontrolled except when accessed directly from the Document Repository. Printed versions are uncontrolled except when stamped "CONTROLLED COPY" in red.
DESCRIPTION:	ARRAYJ-300XX-64P-PCB	PAGE 1 OF 1

onsemi and onsemi are trademarks of Semiconductor Components Industries, LLC dba onsemi or its subsidiaries in the United States and/or other countries. onsemi reserves the right to make changes without further notice to any products herein. onsemi makes no warranty, representation or guarantee regarding the suitability of its products for any particular purpose, nor does onsemi assume any liability arising out of the application or use of any product or circuit, and specifically disclaims any and all liability, including without limitation special, consequential or incidental damages. onsemi does not convey any license under its patent rights nor the rights of others.

ARRAYJ-300XX-16P-PCB
CASE 100DJ
ISSUE O

DATE 31 JUL 2018



ArrayJ-30035-16P-PCB Pin Configuration			
J1		J2	
Pin #	Signal	Pin #	Signal
1	S2	1	S9
2	F1	2	F9
3	S1	3	S10
4	F2	4	F10
5	S3	5	S11
6	F3	6	F11
7	COM	7	COM
8	COM	8	COM
9	F4	9	S12
10	S4	10	F12
11	F8	11	F16
12	S8	12	S16
13	COM	13	COM
14	COM	14	COM
15	F7	15	F15
16	S7	16	S15
17	F6	17	F14
18	S6	18	S14
19	S5	19	S13
20	F5	20	F13

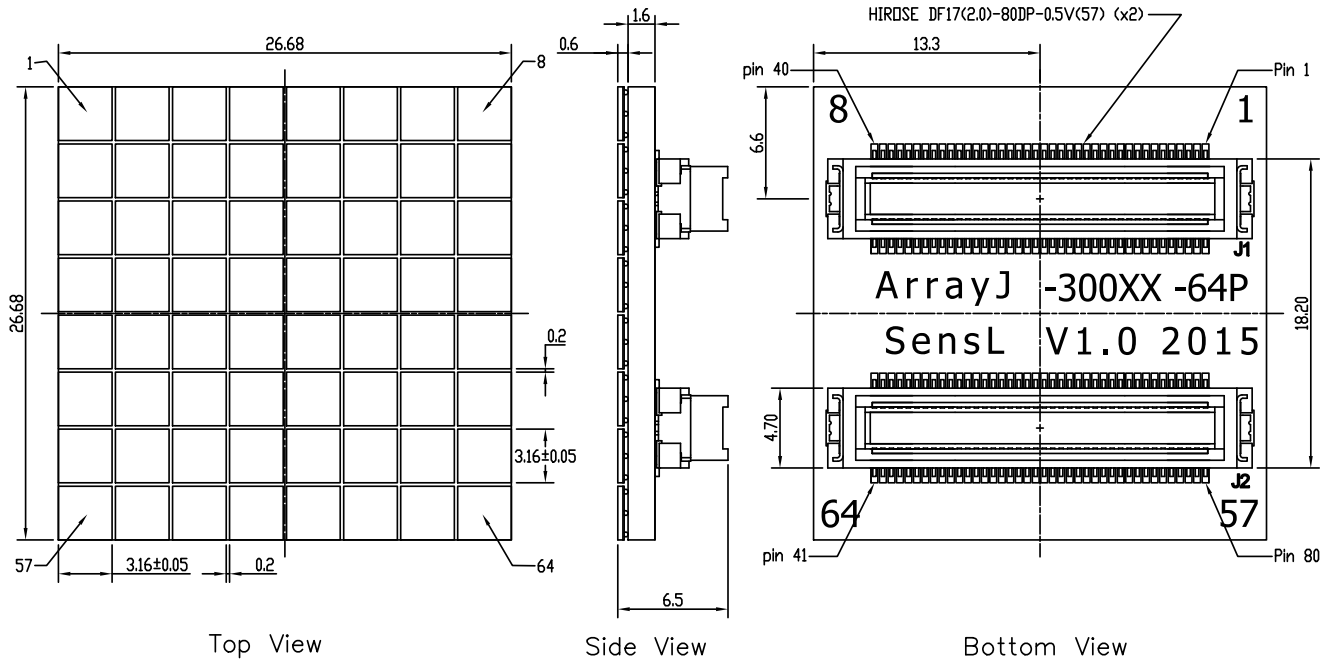
Signal Description	
Sn	SiPM n Standard Output/Anode
Fn	SiPM n Fast Output
COM	Common Cathode

DOCUMENT NUMBER:	98AON95341G	Electronic versions are uncontrolled except when accessed directly from the Document Repository. Printed versions are uncontrolled except when stamped "CONTROLLED COPY" in red.
DESCRIPTION:	ARRAYJ-300XX-16P-PCB	PAGE 1 OF 1

onsemi and onsemi are trademarks of Semiconductor Components Industries, LLC dba onsemi or its subsidiaries in the United States and/or other countries. onsemi reserves the right to make changes without further notice to any products herein. onsemi makes no warranty, representation or guarantee regarding the suitability of its products for any particular purpose, nor does onsemi assume any liability arising out of the application or use of any product or circuit, and specifically disclaims any and all liability, including without limitation special, consequential or incidental damages. onsemi does not convey any license under its patent rights nor the rights of others.

ARRAYJ-300XX-64P-PCB
CASE 100DK
ISSUE 0

DATE 31 JUL 2018



All Dimensions ± 0.1mm Unless Otherwise Stated

Pin Configuration							
J1				J2			
Pin #	Signal	Pin #	Signal	Pin #	Signal	Pin #	Signal
1	S9	41	COM	1	S41	41	COM
2	S1	42	F24	2	S33	42	F56
3	F9	43	F32	3	F41	43	F64
4	F1	44	S24	4	F33	44	S56
5	COM	45	S32	5	COM	45	S64
6	S10	46	COM	6	S42	46	COM
7	S2	47	F23	7	S34	47	F55
8	F10	48	F31	8	F42	48	F63
9	F2	49	S23	9	F34	49	S55
10	COM	50	S31	10	COM	50	S63
11	S11	51	COM	11	S43	51	COM
12	S3	52	F22	12	S35	52	F54
13	F11	53	F30	13	F43	53	F62
14	F3	54	S22	14	F35	54	S54
15	COM	55	S30	15	COM	55	S62
16	S12	56	COM	16	S44	56	COM
17	S4	57	F21	17	S36	57	F53
18	F12	58	F29	18	F44	58	F61
19	F4	59	S21	19	F36	59	S53
20	COM	60	S29	20	COM	60	S61
21	S13	61	COM	21	S45	61	COM
22	S5	62	F20	22	S37	62	F52
23	F13	63	F28	23	F45	63	F60
24	F5	64	S20	24	F37	64	S52
25	COM	65	S28	25	COM	65	S60
26	S14	66	COM	26	S46	66	COM
27	S6	67	F19	27	S38	67	F51
28	F14	68	F27	28	F46	68	F59
29	F6	69	S19	29	F38	69	S51
30	COM	70	S27	30	COM	70	S59
31	S15	71	COM	31	S47	71	COM
32	S7	72	F18	32	S39	72	F50
33	F15	73	F26	33	F47	73	F58
34	F7	74	S18	34	F39	74	S50
35	COM	75	S26	35	COM	75	S58
36	S16	76	COM	36	S48	76	COM
37	S8	77	F17	37	S40	77	F49
38	F16	78	F25	38	F48	78	F57
39	F8	79	S17	39	F40	79	S49
40	COM	80	S25	40	COM	80	S57

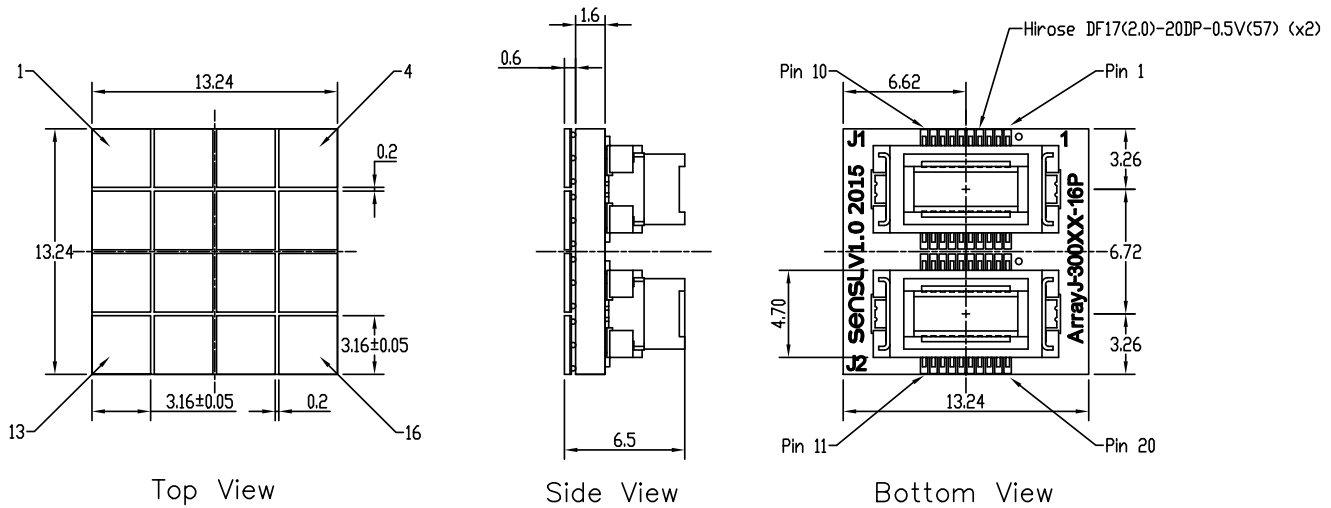
Signal Description	
Sn	SiPM n Standard Output/Anode
Fn	SiPM n Fast Output
COM	Common Cathode

DOCUMENT NUMBER:	98AON95342G	Electronic versions are uncontrolled except when accessed directly from the Document Repository. Printed versions are uncontrolled except when stamped "CONTROLLED COPY" in red.
DESCRIPTION:	ARRAYJ-300XX-64P-PCB	PAGE 1 OF 1

onsemi and onsemi are trademarks of Semiconductor Components Industries, LLC dba onsemi or its subsidiaries in the United States and/or other countries. onsemi reserves the right to make changes without further notice to any products herein. onsemi makes no warranty, representation or guarantee regarding the suitability of its products for any particular purpose, nor does onsemi assume any liability arising out of the application or use of any product or circuit, and specifically disclaims any and all liability, including without limitation special, consequential or incidental damages. onsemi does not convey any license under its patent rights nor the rights of others.

ARRAYJ-300XX-16P-PCB
CASE 100DJ
ISSUE O

DATE 31 JUL 2018



ArrayJ-30035-16P-PCB Pin Configuration			
J1		J2	
Pin #	Signal	Pin #	Signal
1	S2	1	S9
2	F1	2	F9
3	S1	3	S10
4	F2	4	F10
5	S3	5	S11
6	F3	6	F11
7	COM	7	COM
8	COM	8	COM
9	F4	9	S12
10	S4	10	F12
11	F8	11	F16
12	S8	12	S16
13	COM	13	COM
14	COM	14	COM
15	F7	15	F15
16	S7	16	S15
17	F6	17	F14
18	S6	18	S14
19	S5	19	S13
20	F5	20	F13

Signal Description	
Sn	SiPM n Standard Output/Anode
Fn	SiPM n Fast Output
COM	Common Cathode

DOCUMENT NUMBER:	98AON95341G	Electronic versions are uncontrolled except when accessed directly from the Document Repository. Printed versions are uncontrolled except when stamped "CONTROLLED COPY" in red.
DESCRIPTION:	ARRAYJ-300XX-16P-PCB	PAGE 1 OF 1

onsemi and onsemi are trademarks of Semiconductor Components Industries, LLC dba onsemi or its subsidiaries in the United States and/or other countries. onsemi reserves the right to make changes without further notice to any products herein. onsemi makes no warranty, representation or guarantee regarding the suitability of its products for any particular purpose, nor does onsemi assume any liability arising out of the application or use of any product or circuit, and specifically disclaims any and all liability, including without limitation special, consequential or incidental damages. onsemi does not convey any license under its patent rights nor the rights of others.